



**Réponses potentielles  
stratégiques des régions et  
marques  
Adaptations potentielles en  
Australia**

Lien de la Vigne

*Peter Hayes and Tony Battaglione*

# DAFF Irrigation Industries

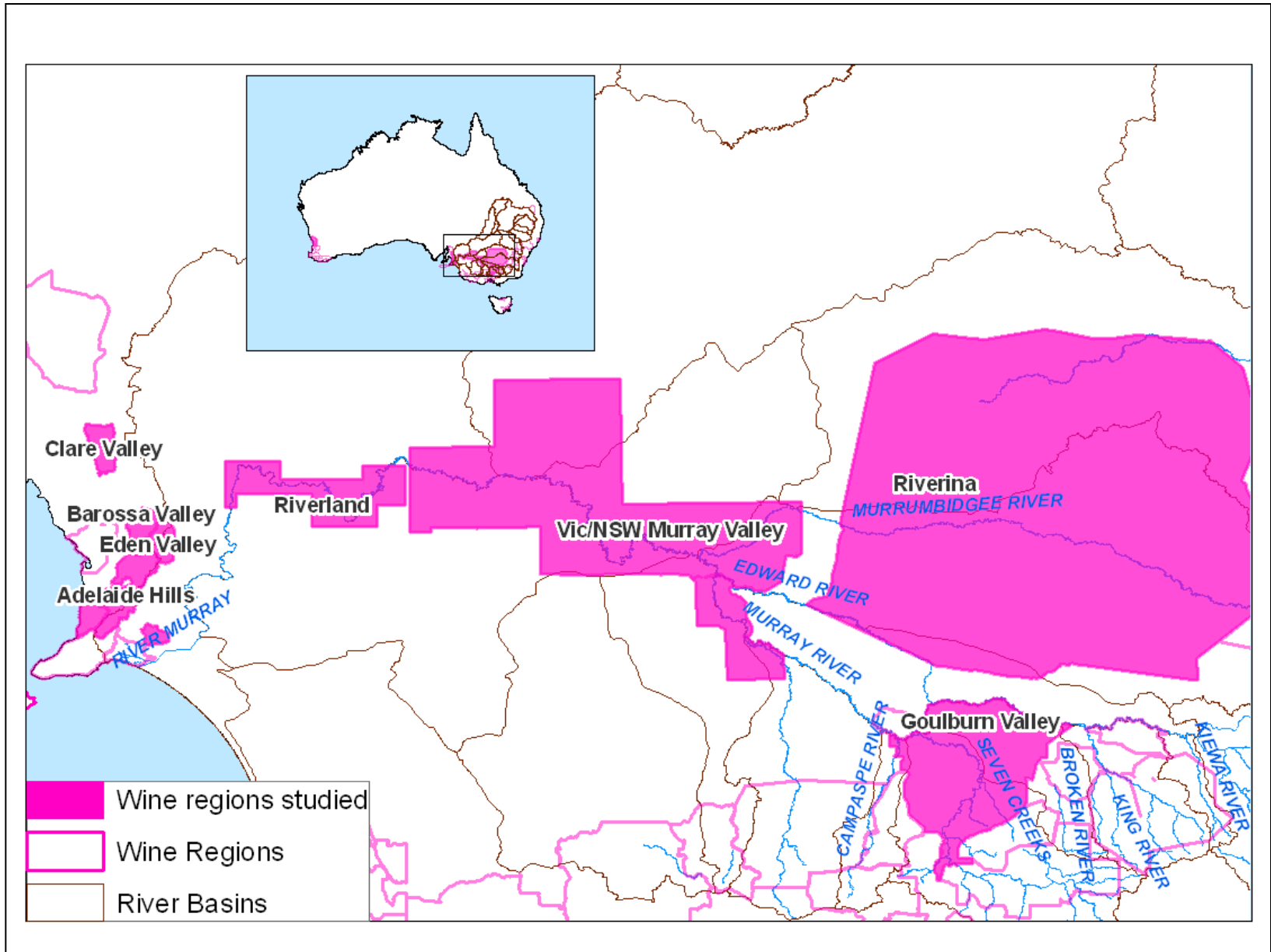
## Workshop Programme-2008/09

### KEY TOPICS

- post-harvest care of vines
- managing the conversion to drip and sub-surface drip irrigation
- sustainable salinity management on your vineyard
- insights into varietal and rootstock differences in water use
- insights into the relationships between grape yield and water
- water allocation scenarios in key regions within the Murray Darling Basin for the 2008/09 season and beyond
- regional case studies (practical 'how did I manage this season')
- how water allocation decisions are made
- adaptation and delivery of the Water Purchase and Budget Tool
- painting the picture - what to look out for your business
- understanding how vines cope with periods of hot weather and extended drought conditions.

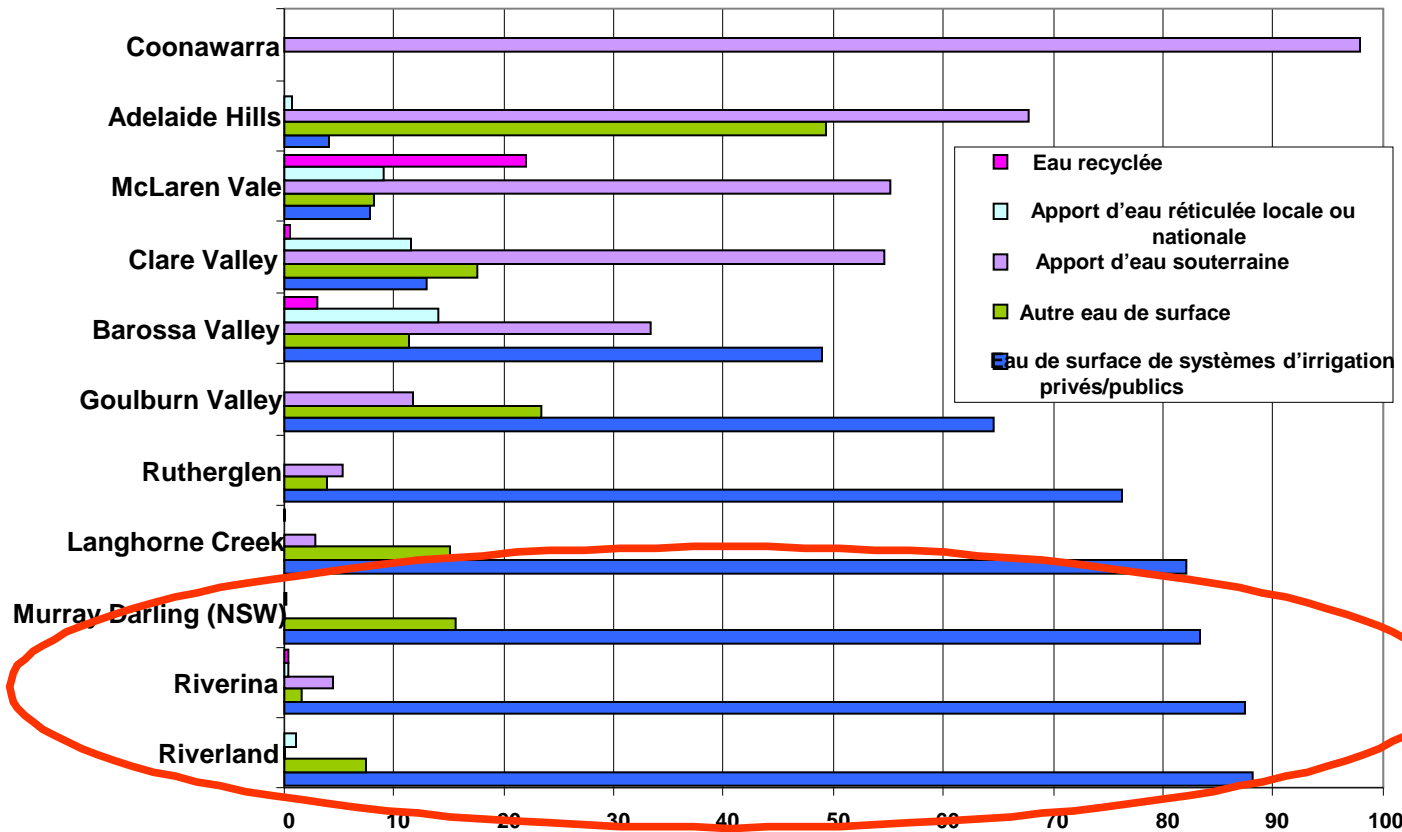
# Objectifs de l'OIV

- **Informar ses membres** des mesures par lesquelles les intérêts des producteurs, consommateurs et autres acteurs du secteur viti-vinicole doivent être pris en compte
- **Apporter un appui aux autres organisations internationales**, à la fois intergouvernementales et non gouvernementales, en particulier à celles qui exercent des activités de normalisation ;
- **Contribuer à l'harmonisation internationale** des pratiques et normes existantes et, dans la mesure du nécessaire, à la préparation de nouvelles normes internationales destinées à améliorer les conditions de production et de commercialisation des produits de la vigne et du vin mais aussi à s'assurer que les intérêts des consommateurs sont pris en compte

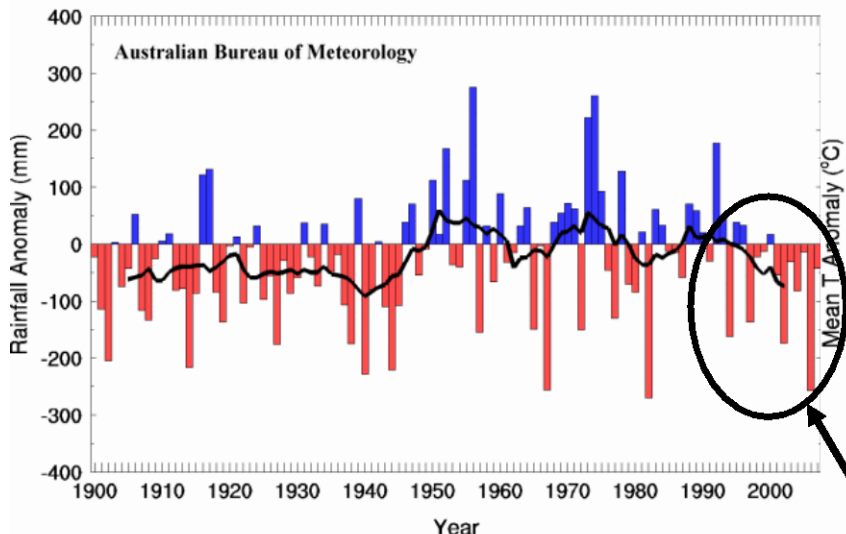


# Sources d'eau d'irrigation dans les vignobles dans les régions à Indication Géographique

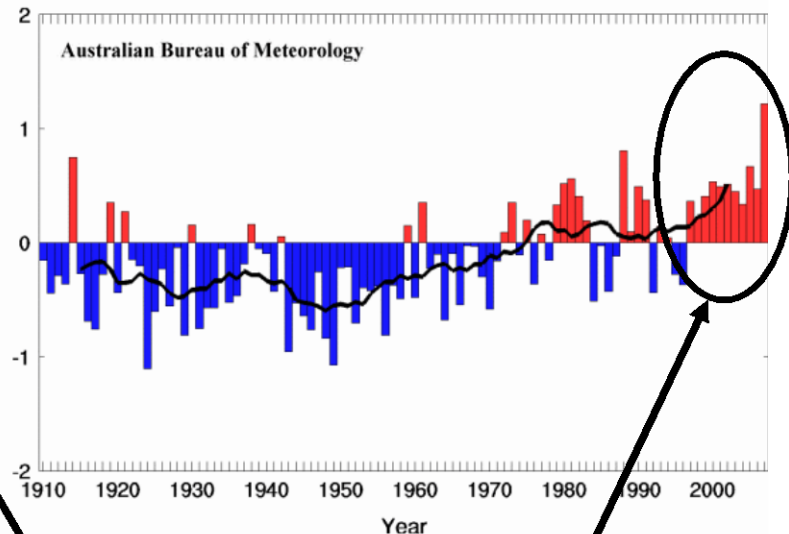
Proportion of water source used in some wine regions of Australia



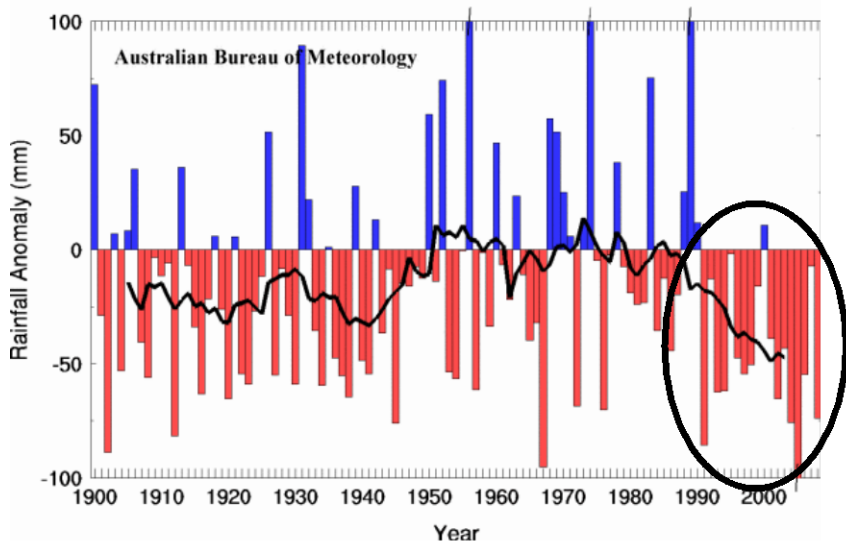
Southeastern Australia Annual Rainfall Anomaly (base 1961-90)



Southeastern Australia Annual Mean T Anomaly (base 1961-90)



Southeastern Australia Autumn Seasonal Rainfall Anomaly (base 1961-90)



lack of sustained intervening wet periods

combined with record high temperatures

most notably in autumn

→ a drought impact without historical precedent in Southeastern Australia

# Répartition actuelle

Répartition de l'irrigation au :		15/08/08
NSW-Murray Valley	High Security	25%
	General Security	0%
NSW-Murrumbidgee Valley	High Security	40%
	General Security	0%
NSW Lower Darling	High Security	100%
	General Security	0%
Victoria- Murray Valley	High reliability	0%
Victoria- Goulburn Valley	High reliability	0%
South Australia	Irrigation Allocation	15/09/08 11%



---

## Water&Vine Fact Sheets

[Fact Sheet 01 - Post Harvest Care](#)

[Fact Sheet 02 - Conversion to Drip](#)

[Fact Sheet 03 - Salinity Management](#)

[Fact Sheet 04 - Varietal and Rootstock WUE](#)

[Fact Sheet 05 - Yield and Water](#)

[Fact Sheet 06 - Water 2008-09 and beyond](#)

Module 7 case studies will be available to download in the coming months.

[Fact Sheet 08 - Water Allocation Decisions](#)

[Fact Sheet 09 - CCW Water Tools](#)

[Fact Sheet 10 - Painting the Picture for your business](#)

[Fact Sheet 11 - Vine Physiology](#)



# Diffusion à l'échelle régionale



## MODULE TOPICS:

**Module 1** – Post Harvest Care

**Module 2** – Converting to Drip

**Module 3** – Salinity Management

**Module 4** – Varietal and Rootstock WUE

**Module 5** – Yield and Water

**Module 6** – Water 2008-09 and beyond

**Module 7** – Regional Case Studies

**Module 8** – Water Allocation Decisions

**Module 9** – CCW Water Tool

**Module 10** – Painting the Picture

**Module 11** – Vine Physiology Tool

Date	Region	Venue	Modules Delivered	Modules to be delivered (Nov/Dec)
29th Aug	Riverland - Renmark	Renmark Hotel	5, 6, 9, 10	1, 11
3rd Sept	Riverland – Berri	Berri Hotel	5, 6, 9, 10	1, 11
4th Sept	Riverland – Waikerie	Waikerie Hotel	5, 6, 9, 10	1, 11
12th Sept	Murray Valley - Mildura	Mildura Workingmans	2, 4, 5	1, 11
15th Sept	Murray Valley – Robinvale	Robinvale Golf Club	2, 4, 5	1, 11
16th Sept	Murray Valley – Swan Hill	Commercial Hotel	2, 4, 5	1, 11
18th Sept	Riverina	Gemini	2, 5, 6, 8	1, 11
25th Sept	Langhorne Creek	LC Bowling Club	3, 11	1, 4
2nd Oct	Barossa	Barossa Weintal Resort	4, 5, 6, 8, 9, 10	1, 3, 11
16th Oct	NE Victoria	Wangaratta Gateway	4, 5, 7, 8, 11	1, 10



# WATER & VINE

Managing the challenge

## MODULE 06

Water allocation scenarios  
in key regions within the  
Murray Darling Basin for the  
2008/09 season and beyond

### AUTHORS:

Leanne Webb, Greg Dunn and Snow Barlow - The University of Melbourne



These updates are supported by the Australian Government through the Irrigation Industries Workshop Programme - Wine Industry Project in partnership with the Department of Agriculture, Fisheries and Forestry and the Grape and Wine Research and Development Corporation.



[waterandvine.gwrdc.com.au](http://waterandvine.gwrdc.com.au)



# WATER & VINE

Managing the challenge



## MODULE 11

Understanding how vines cope  
with periods of hot weather and  
extended drought conditions

### AUTHOR:

Everard Edwards - CSIRO Plant Industry



These updates are supported by the Australian Government through the Irrigation Industries Workshop Programme - Wine Industry Project in partnership with the Department of Agriculture, Fisheries and Forestry and the Grape and Wine Research and Development Corporation.



[waterandvine.gwrdc.com.au](http://waterandvine.gwrdc.com.au)

# National Climate Change Research

- Core program of investment by GWRDC addresses:
  - climate change modelling,
  - heat stress,
  - grapevine physiology,
  - water use,
  - climate change extension and
  - adaptable planting material.
- Additional funding from DAFF Australia's Farming Future Climate Change Research Program; A\$1.2M over 3 years addresses:
  - identifying new wine grape varieties, clones and rootstocks that are suited to warmer and drier conditions
  - increasing grapegrowers' abilities to manage more variable yields, shifts in ripening times and compressed growing seasons
  - delivery of knowledge, tools and strategies for climate change adaptation.

# PGIBSA Rootstock Adaptation